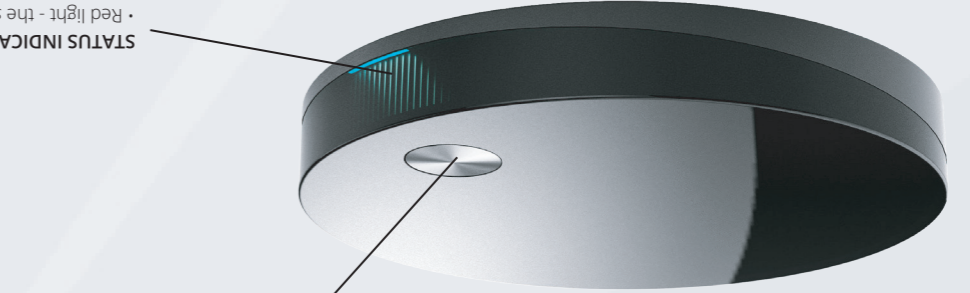


VIP4302 OVERVIEW



- Red light - the set-top box is in standby mode.
- Amber light - the set-top box is starting.
- Green light - the set-top box is operational.
- Flashing green light - the set-top box receives a signal from the remote control or a keyboard.

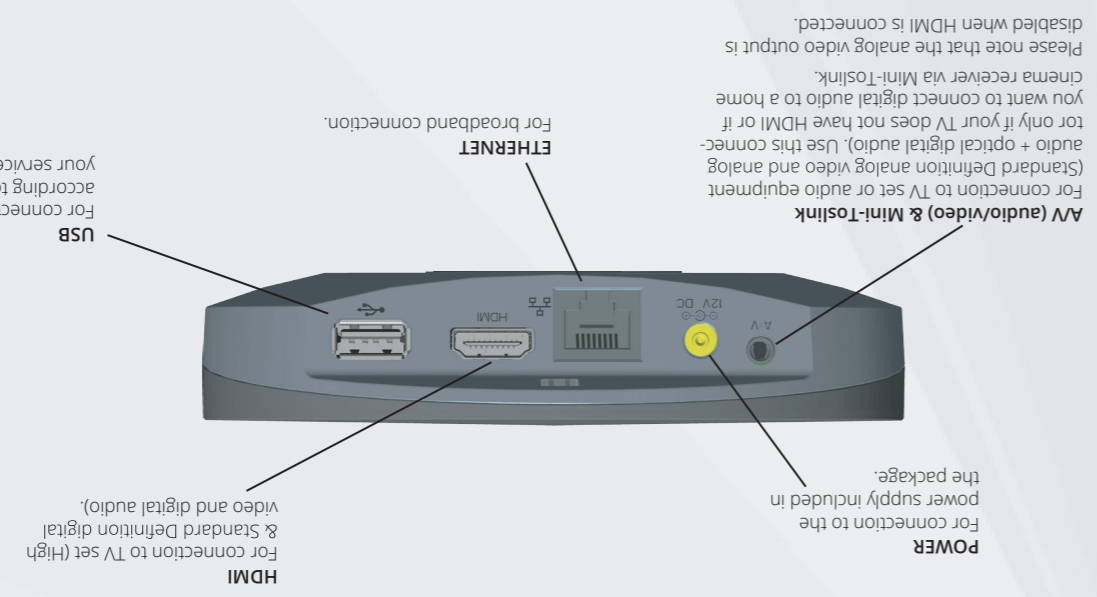


STANDBY BUTTON
 • Press to switch between standby and active.



Front/Top

Rear



Scan the QR code to view or download digital versions of the product documents.

OPEN SOURCE SOFTWARE INFORMATION
 The software of this product may contain certain open source software modules which are subject to Open Source Software license terms (see <https://opensource.org/osd> for definition). Such Open Source Software components and/or versions may change in the future versions of the software product.
 A list of the Open Source Software used or provided as embedded into the current software of the product and their corresponding licenses and version number are, to the extent required by applicable terms, available on Vantiva's website at the following address: www.vantiva.com/opensource or at another address as Vantiva may provide from time to time. If and where applicable, depending on the terms of the applicable Open Source Software licenses, the source code of the Open Source Software is available for free upon request.
 For avoidance of doubt, Open Source Software is only licensed by the original owner of the Open Source Software under the terms set forth in the designated Open Source License.

© 2026 Vantiva SA. All rights reserved. Vantiva and the Vantiva logo are registered trademarks of Vantiva SA. ARRIS and the ARRIS logo are registered trademarks of CommScope and are used under license by Vantiva SA. All other company and product names mentioned are trademarks of their respective owners.

The terms HDMI, HDMI High-Definition Multimedia Interface, and the HDMI Logo are trademarks or registered trademarks of HDMI Licensing Administrator, Inc.

Manufactured under license from Dolby Laboratories. Dolby, Dolby Audio, and the double-D symbol are trademarks of Dolby Laboratories Licensing Corporation.

Caring for the Environment by Recycling
 Electrical and electronic equipment that has run out of service life must be handed over to municipal collection centres or may be delivered to the dealer when purchasing new equipment.

Please recycle product packaging and this document.

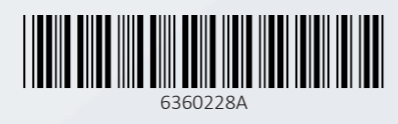
Ambient operating temperature	0-40° C at 0-95% non condensing humidity
Voltage	200-240 V ~, 50-60 Hz
Power supply unit	This Class II product, VIP4302, shall be powered by the Limited Power Supply that is provided together with the product.
Maximum power consumption	4.5W

Hereby, Vantiva Technologies declares that the radio equipment type VIP4302 is compliant with Low Voltage Directive (LVD) 2014/35/EU & EMC Directive 2014/30/EU, Energy related Products Directive 2009/125/EC and RoHS Directive 2011/65/EU. The latest version of EU declaration of conformity is available at the following internet address: www.vantiva.com/regulatory-information

Energy efficiency information for the product and the power supply provided with it can be found at the following address: www.vantiva.com/regulatory-information

EU Compliance is maintained at the following address:
 Vantiva Technologies, 10 boulevard de Grenelle, 75015 Paris, France

Product safety
 The General Product Safety Regulation (GPSR) was established in response to the challenges and emerging risks associated with new technologies. It aims to protect consumers while promoting trust and transparency. We are committed to ensuring that you have the information you need to use our products responsibly and with confidence. Nevertheless, if you have any questions, concerns or comments regarding the safety of our products, please do not hesitate to contact us at gpsr@vantiva.com, our customer support team will be delighted to assist you.



VIP4302

Installation guide

1 Connect to the TV set

Connect an HDMI cable between the set-top box and the HDMI connector on the TV set. This is the preferred method and no other video/audio connection is needed when HDMI is used. Please note that the analog video output is disabled when HDMI is connected.

To display the picture from the set-top box, the TV set must be switched to the correct external input. This is either done automatically or manually, using a button on the TV remote control. See your TV user's guide for instructions.

2 Connect to broadband

Connect an Ethernet cable between the set-top box and the router/modem or the Ethernet wall connector as indicated by your broadband operator.

3 Connect to power

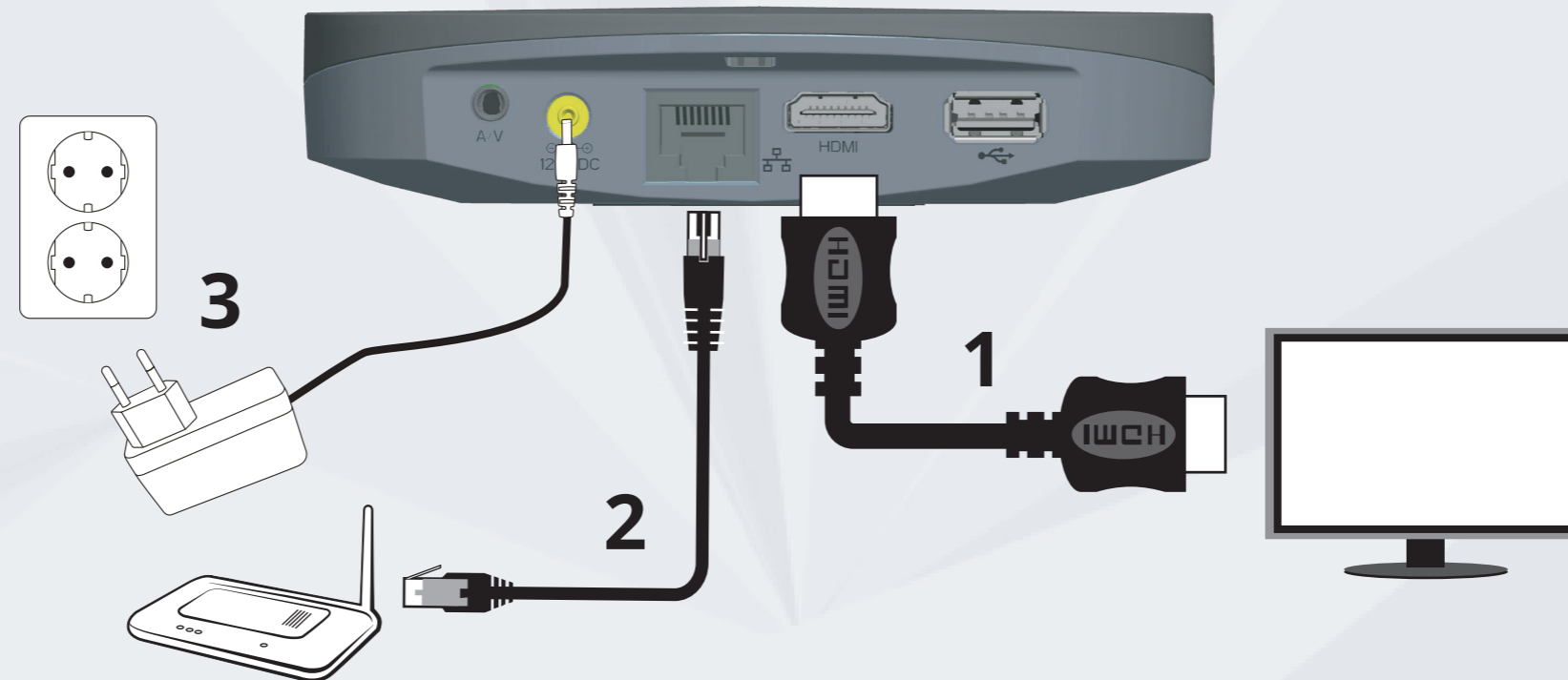
Connect the power supply to the DC jack on the set-top box and to a power outlet.

4 Prepare the remote control

Insert the batteries in the remote control.

NOTE:

Do not use any power supply other than the one supplied with the product. Doing so may cause fire or seriously damage the set-top box.



INSTALLATION OPTIONS

Connect video/audio to the TV set

If your TV does not have HDMI you can connect a 3.5 mm to 3xRCA audio/video cable from the A/V jack on the set-top box to the video and R+L audio connectors on the TV set. (Connectors are normally colour coded; White = Left audio, Red = Right audio, Yellow = Video)

Connect video/audio through a home cinema system or HiFi equipment

1. Digital audio equipment with HDMI inputs: Instead of following the installation guide for HDMI above, connect the HDMI

cable from the set-top box to the home cinema system, and the home cinema system HDMI output to the TV set.

2. Digital audio equipment without HDMI input: Follow the installation guide for HDMI above and then connect either an optical Toslink cable or an electrical S/PDIF cable, depending on what is available on your equipment, from the TV set's digital audio output to the input on the digital audio equipment.

Note that you may have to change your settings in the TV set to make sure the digital output is properly transmitted from the TV set.

Alternatively you can connect an optical Mini-Toslink cable to the A/V connector on the set-top box and to one of the optical inputs of your home cinema system.

3. Analog audio equipment: Connect an analog audio cable with 3.5 mm stereo plug in one end to the A/V connector of the set-top box and the other end with 2xRCA to your audio equipment.

NOTE:

The set of cables and other accessories supplied by your service provider together with this product may vary.

Placement

Never attempt to open the set-top box or the external power supply adapter. There are no user-serviceable parts inside them. The only way to disconnect the set-top box from the power supply is to remove the external power supply adapter from the power point. Therefore you must install the set-top box near to the power point, which should be easily accessible. Never place the set-top box on top of or close to any heat sources such as other electronic devices. Doing so will reduce life time and may cause irreparable damage or malfunction. Please note that the ambient temperature must be below 40° C. Please be sure to maintain necessary space around the set-top box to allow for proper ventilation.

The set-top box is designed to stand on a horizontal surface. It can alternatively be mounted on the wall using the fittings on the bottom side.

The equipment is only suitable for mounting at heights of less than 2 meters. The mounting marking information is located on the bottom of the equipment.

Please ensure that there is line-of-sight between the front side of the set-top box and the remote control. Modern flat screen TV sets and low energy lamps emit light that in some cases may interfere with the IR signal used by remote controls. If the remote control is not working properly, try altering the position of the set-top box relative to the remote control.